

TREFETHEN  
The Family and The Landing

by

*Jessie B. Trefethen*

CS  
71  
T7855  
1960

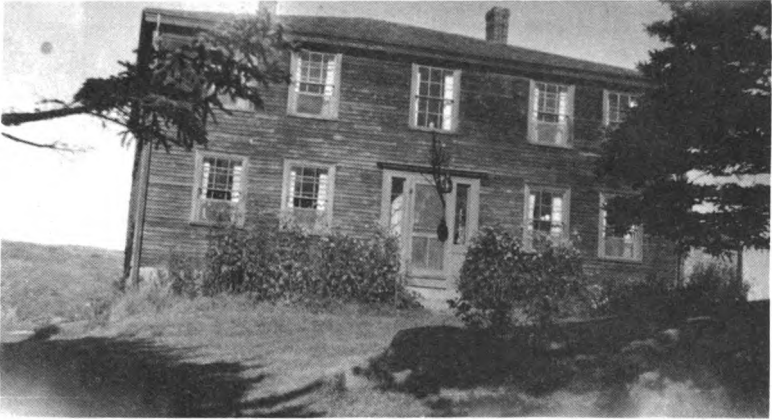




### *THE AUTHOR*

Miss Jessie B. Trefether lives in the Trefethen Homestead at Peaks Island where she was born. It is a Cape Cod house built by her great-grandfather, Henry Trefethen of House Island for his two oldest children, in 1844. She attended the Peaks Island School and the Portland High School, and she has a B. A. degree from Mount Holyoke College. She went to the Pennsylvania Academy of Fine Arts, Philadelphia, for three years and was awarded a Cresson Scholarship for European study and travel. She taught Art in boarding schools for girls; and while teaching at the Knox School, Cooperstown, New York, received an appointment to the Fine Arts Department, Oberlin College, Oberlin, Ohio. She is now an Associate Professor Emeritus of Oberlin College. Along with teaching and painting, she has more than usual interest in Early American Architecture, Antique Furniture, Crafts, and the Civilization that produced them. She is a ninth generation Trefethen in New England, and is a part of the tradition about which she writes. She is also a direct descendant of George Cleeves who founded Portland in 1633, and Peaks Island was a part of his domain. She has become a painter of Maine rocks against the sea, and she writes about the land where she belongs.





*"The Influence" - Monhegan Island, Maine  
Built by Henry Trefethen, 1826*

COURTESY OF MRS. VARNUM



*Old Grandfather's Clock*

*Made by Henry Trefethen of New Castle, N. H.  
Mentioned in the will of 1797. This clock was  
later at Monhegan, House Island and Peaks Island.*